

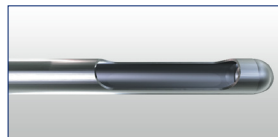
# ATEC® MRI

Powerful tethered vacuum.

Designed for compassionate patient care.

At Hologic, we believe that great science delivers meaningful innovation. This mindset led Hologic to become the pioneer and market leader in MRI breast biopsy with over 15 years of experience.<sup>1</sup>

ATEC® MRI  
Access Needle



The ATEC system is designed for **compassionate patient care**, **speed** and **simplicity**, critical of an MRI-guided breast biopsy.



## FAST.

- Tissue acquisition occurs every 4.5 seconds, typically lasting less than 30 seconds total.<sup>2</sup>
- With ATEC MRI, physicians have reduced the typical procedure time to under 40 minutes, greatly improving patient comfort and optimising costly magnet time.<sup>3</sup>

## COMPASSIONATE.

- Automatically delivers local anesthetic directly to the biopsy site without interruption.
- MRI access needle has a blunt tip designed for thin breasted women. Minimum compression required is 16mm.

## EASY.

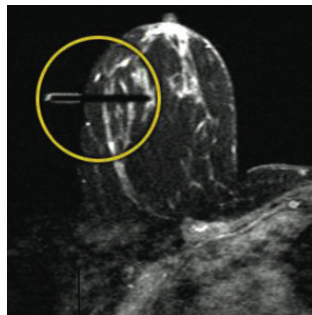
- The ATEC Sapphire 200 console can be used in all 3 modalities.
- Setup in less than one minute, no programming required.<sup>4</sup>
- Fully disposable handpiece.
- Closed system reduces contamination risk.



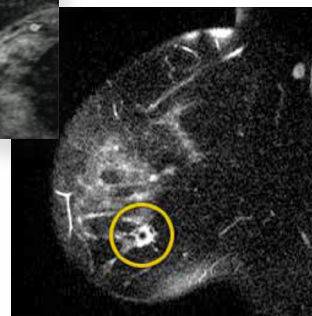
## ATEC® Introducer Localisation System (ILS)

Target with confidence. Exclusive to the ATEC® MRI Biopsy system, the ATEC ILS is designed for identification, localisation and confirmation of the target area. Each ATEC ILS is comprised of introducer stylet, introducer sheath, needle guide and localising obturator.

NOTE: Availability may vary by country.



Axial image



Sagittal image



## Markers

Two titanium TriMark® and two titanium SecurMark® marker shapes are designed to provide optimal MRI artifact and feature a rigid-end-deploy device for an integrated MRI solution.



### TriMark Marker

Reliable and simple bio-compatible **titanium metal markers**, optimal for thin-breasted patients and superficial lesions.

Cork

Hourglass

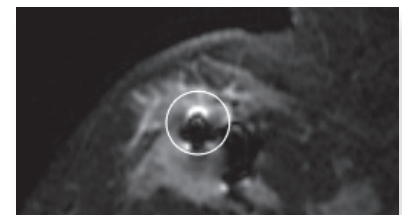


### SecurMark Marker

The bio-absorbable suture-like net that carries a bio-compatible permanent marker, is designed to **minimise movement** within the biopsy cavity and **enhance ultrasound visualisation** for three to four weeks post-biopsy.<sup>5</sup>

Cork

Hourglass



SecurMark Stainless Steel under MRI

### ATEC MRI Biopsy Needle Specification

	Standard ATEC MRI biopsy device	ATEC MRI access biopsy device
Gauge	9G	9G
Length	14cm	14cm
Aperture	20mm	12mm
Tubing	20ft	20ft

NOTE: Availability may vary by country.

## References

1. First MRI guided breast biopsy system in 2003. 2. Hologic data on file, Internal testing performed at Hologic and maintained in PLM system VER-08019 3. Schradling S, Simon B, Braun M, Wardelmann E, Schild H, Kuhl C. MRI-Guided Breast Biopsy: Influence of Choice of Vacuum Biopsy System on the Mode of Biopsy of MRI Only Suspicious Breast Lesions. AJR 2010; 194: 1650-1657. 4. Data on File PPR-00046. 5. Pickney and Shah, 2013, Prospective comparative study to evaluate the sonographic visibility of five commercially available breast biopsy markers. (GelMark, HydroMARK, SecurMark, SENOMARK, and UltraClip by Bard (BioDur® 108 core)). Yen et al. verified that SecurMark and SENOMARK devices show reduced displacement when compared to traditional metal surgical clips (28% and 27% vs 38% displacement, p = 0.001 and p = 0.0001)

## Breast & Skeletal Health | Hologic.com | euinfo@hologic.com

SSL-00499-EUR-EN Rev 001 © 2021 Hologic, Inc. All rights reserved. Hologic, ATEC, Eviva, TriMark, SecurMark and associated logos are trademarks and/or registered trademarks of Hologic, Inc. and/or its subsidiaries in the United States and/or other countries. This information is intended for medical professionals and is not intended as a product solicitation or promotion where such activities are prohibited. Because Hologic materials are distributed through websites, eBroadcasts and tradeshows, it is not always possible to control where such materials appear. For specific information on what products are available for sale in a particular country, please contact your local Hologic representative or write to euinfo@hologic.com.